

Features

- Wide 2.5V to 6.0V Operating Input Range
- 1.2A Continuous Output Current
- 1.5MHz Switching Frequency
- Short Protection with Hiccup-Mode
- Built-in overcurrent Limit
- DCM for High Efficiency in Light Load Condition
- CCM for Low noise
- Integrated internal Soft-Start
- 250/130mΩ Low RDS(ON) Internal MOSFETs
- Output Adjustable from 0.6V
- Low EMI Signature
- 100% Duty cycle
- Built-in 35Ω Discharge Resistor
- Thermal Shutdown
- COT Mode

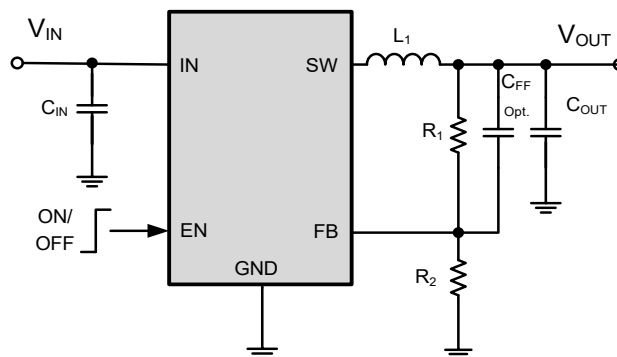
Applications

- Cellular and Smart Phones
- Wireless and DSL Modems
- PDAs
- Portable Instruments
- Digital Still and Video Cameras
- PC Cards

General Description

The HE9001 is a high-efficiency monolithic synchronous buck regulator using a constant frequency, COT mode architecture. The device is available in an adjustable version. Supply current with no load is 35uA and drops to <1uA in shutdown. The 2.5V to 6.0V input voltage range makes the HE9001 ideally suited for single Li-Ion battery powered applications. 100% duty cycle provides low dropout operation, extending battery life in portable systems. DCM/CCM mode operation provides very low output ripple voltage for noise sensitive applications. Switching frequency is internally set at 1.5MHz, allowing the use of small surface mount inductors and capacitors. Low output voltages are easily supported with the 0.6V feedback reference voltage. The HE9001 requires a minimal number of readily available, external components and is available in a small package.

Typical Application Circuit

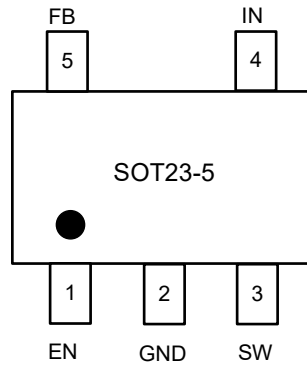


Basic Application Circuit

Pin Description

Pin Configuration

TOP VIEW



Pin Description

Pin	Name	Function
1	EN	Chip Enable Pin. Drive EN above 1.2V to turn on the part. Drive EN below 0.6V to turn it off. Do not leave EN floating.
2	GND	Ground Pin.
3	SW	Power Switch Output. It is the switch node connection to Inductor. This pin connects to the drains of the internal P-ch and N-ch MOSFET switches.
4	IN	Power Supply Input. Must be closely decoupled to GND with a 10 μ F or greater ceramic capacitor.
5	FB	Output Voltage Feedback Pin. An internal resistive divider divides the output voltage down for comparison to the internal reference voltage.

Order Information ⁽¹⁾

Part No.	Description	Package	T/R Qty
HE9001	2.5-5.5V, 1.2A, 1.5MHz, VFB 0.6V, DCM , SOT23-5	SOT23-5	3000PCS
HE9001F	2.5-5.5V, 1.2A, 1.5MHz, VFB 0.6V, CCM , SOT23-5	SOT23-5	3000PCS

Note(1): All HEERMICR parts are Pb-Free and adhere to the RoHS directive.

SPECIFICATIONS

ABSOLUTE MAXIMUM RATINGS ⁽¹⁾⁽²⁾

Item	Min	Max	Unit
VIN voltage	-0.3	6.0	V
EN voltage	-0.3	6.0	V
SW voltage	-3.0 (<10nS)	VIN+1.5V (<10nS)	V
FB voltage	-0.3	6.0	V
Power dissipation (3)	Internally Limited		
Operating junction temperature, TJ	-40	150	°C
Storage temperature, Tstg	-65	150	°C
Lead Temperature (Soldering, 10sec.)		260	°C

Note(1): Exceeding these ratings may damage the device.

Note(2): The device is not guaranteed to function outside of its operating conditions.

RECOMMENDED OPERATING CONDITIONS

Item	Min	Max	Unit
Operating junction temperature (1)	-40	125	°C
Operating temperature range	-40	85	°C
Input voltage VIN	2.5	5.5	V
Output current	0	1.2	A

Note(1): All limits specified at room temperature (TA = 25°C) unless otherwise specified. All room temperature limits are 100% production tested. All limits at temperature extremes are ensured through correlation using standard Statistical Quality Control (SQC) methods. All limits are used to calculate Average Outgoing Quality Level (AOQL).

THERMAL INFORMATION

Item	Description	SOT23-5	Unit
RθJA	Junction-to-ambient thermal resistance (1)(2)	170	°C/W
RθJC(top)	Junction-to-case (top) thermal resistance	130	°C/W

Note(1): The package thermal impedance is calculated in accordance to JESD 51-7.

Note(2): Thermal Resistances were simulated on a 4-layer, JEDEC board.

ESD RATINGS

Item	Description	VALUE	Unit
HBM	Human-body model, pre ANS/ESDA/JEDEC JS-001	±2000	V
CDM	Charge-device model, pre ANS/ESDA/JEDEC JS-002	±1000	V

ELECTRICAL CHARACTERISTICS ⁽¹⁾⁽²⁾

(HE9001)VIN=5V, TA=25°C, unless otherwise specified.

Parameter	Conditions	Min.	Typ.	Max.	Unit
Input Voltage Range		2.5		5.5	V
VIN Under-Voltage Lockout Threshold		2.0	2.1	2.2	V
VIN Under-Voltage Lockout Threshold-Hysteresis			300		mV
Quiescent current into VIN(9001)	Vin=5.0V,Vout=1.8V, Iload=0A	25	30	45	μA
Quiescent current into VIN(9001F)	Vin=5.0V,Vout=1.8V, Iload=0A			10	mA
Shutdown current into VIN pin	VEN = 0V, VIN = 5.0V			1	μA
Regulated Feedback Voltage	VIN=5V, TA=25°C	0.588	0.600	0.612	V
Output Voltage Line Regulation	VIN = 2.5V to 5.5V			0.5	%
Output Voltage Load Regulation	VIN =5V, Out=1.8V, ΔVLOAD(0-2A)			0.5	%
Oscillation Frequency ¹	VIN =5V, Out=1.8V, Iload=0.5A	1.2	1.5	1.7	MHz
On Resistance of PMOS	ISW= 100mA		250		mΩ
ON Resistance of NMOS	ISW= -100mA		130		mΩ
High-Side Switch Current Limit	VIN= 5.0V, FB=90%		2.3		A
Low-Side Switch Current Limit	VIN= 5.0V, FB=90%		1.7		A
EN Rising Threshold		1.0			V
EN Falling Threshold				0.4	V
EN Threshold Hysteresis			100		mV
EN Leakage Current				1	μA
SW Leakage Current	VEN=0V, VIN=Vsw=5V			1	μA
Soft Start		0.7	1.0	1.3	mS
Output Discharger Resistance	VIN=5V, EN=0V		35		Ω
Thermal Shutdown			160		°C
Thermal Hysteresis			10		°C

Note(1): MOSFET on-resistance specifications are guaranteed by correlation to wafer level measurements.

Note(2): Thermal shutdown specifications are guaranteed by correlation to the design and characteristics analysis.

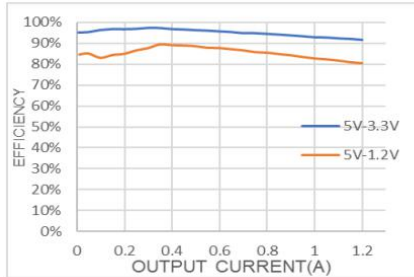
Typical Performance Characteristics ⁽¹⁾⁽²⁾

Note (1): Performance waveforms are tested on the evaluation board.

Note (2): $V_{IN}=5V$, $V_{OUT}=3.3V$, $T_A = +25^{\circ}C$, unless otherwise noted.

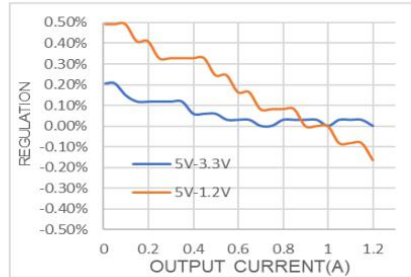
Efficiency vs Load Current

$V_{OUT}=3.3V$, 1.2V



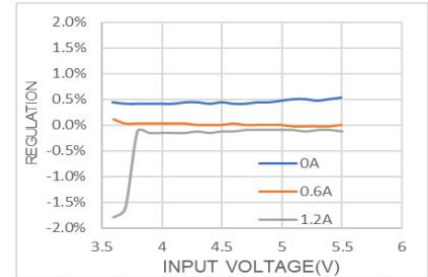
Load Regulation

$V_{OUT}=3.3V$, 1.2V



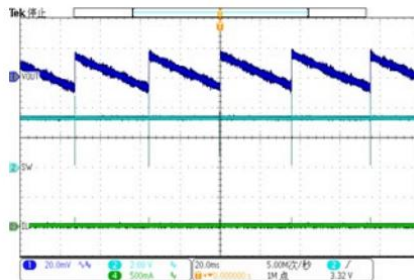
Line Regulation

$V_{OUT}=3.3V$



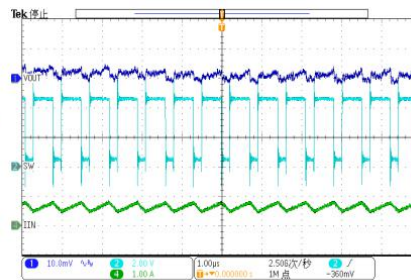
Output Ripple Voltage

$V_{IN}=5V$, $V_{OUT}=3.3V$, $I_{OUT}=0A$



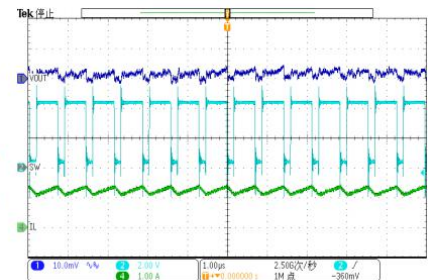
Output Ripple Voltage

$V_{IN}=5V$, $V_{OUT}=3.3V$, $I_{OUT}=0.6A$



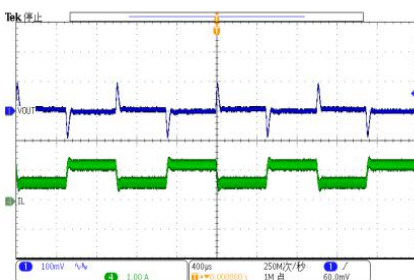
Output Ripple Voltage

$V_{IN}=5V$, $V_{OUT}=3.3V$, $I_{OUT}=1.2A$



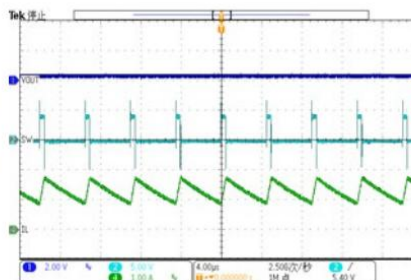
Loop Response

$V_{IN}=5V$, $V_{OUT}=3.3V$, $I_{OUT}=0.6A-1.2A$



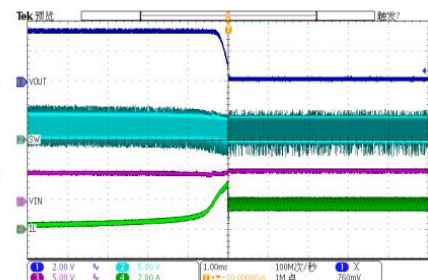
Output Short

$V_{IN}=5V$, $V_{OUT}=3.3V$



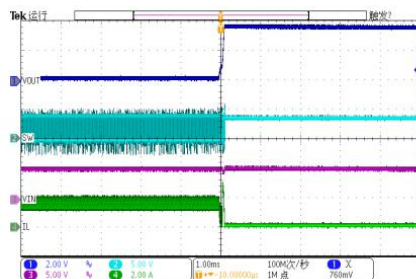
Short Circuit Entry

$V_{IN}=5V$, $V_{OUT}=3.3V$



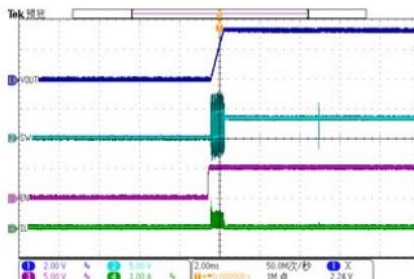
Short Circuit Recovery

$V_{IN}=5V$, $V_{OUT}=3.3V$



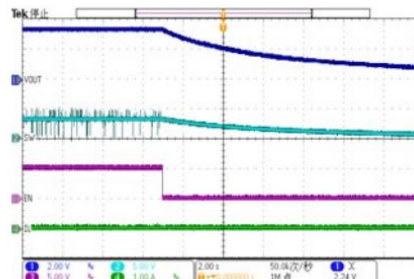
Enable Startup at No Load

$V_{IN}=5V$, $V_{OUT}=3.3V$



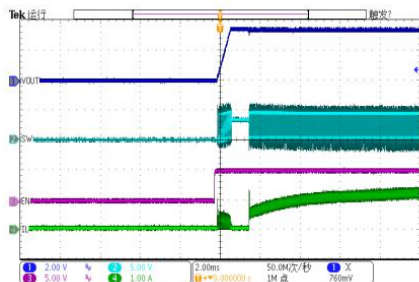
Enable Shutdown at No Load

$V_{IN}=5V$, $V_{OUT}=3.3V$



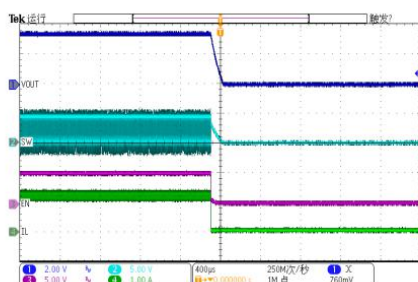
Enable Startup at Full Load

$V_{IN}=5V$, $V_{OUT}=3.3V$, $I_{OUT}=1.2A$



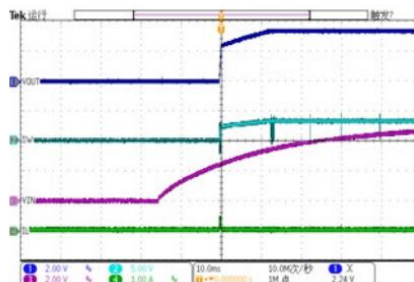
Enable Shutdown at Full Load

$V_{IN}=5V$, $V_{OUT}=3.3V$, $I_{OUT}=1.2A$



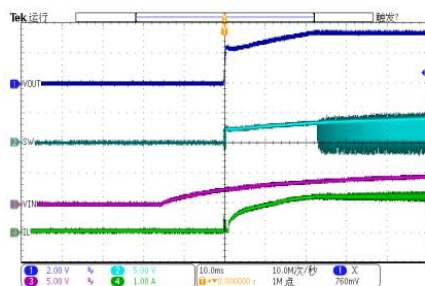
Power Up at No Load

$V_{IN}=5V$, $V_{OUT}=3.3V$, $I_{OUT}=0A$

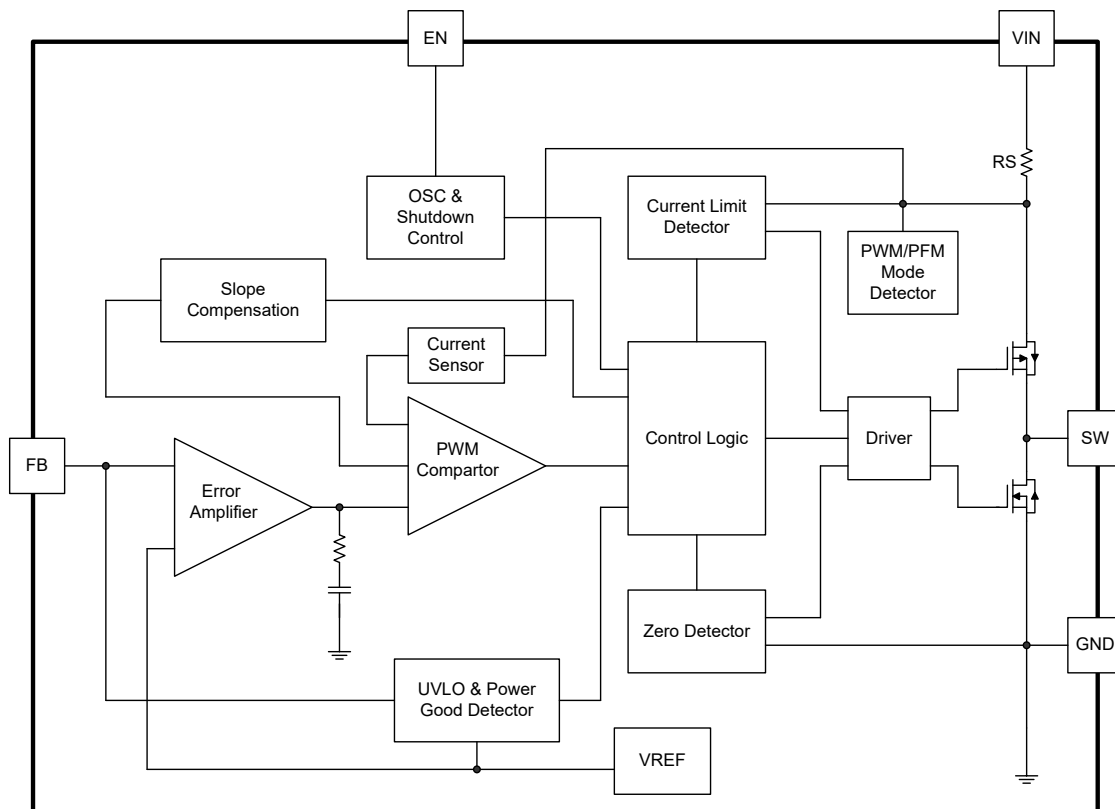


Power Up at Full Load

$V_{IN}=5V$, $V_{OUT}=3.3V$, $I_{OUT}=1.2A$



Functional Block Diagram



Block Diagram

Functions Description

Internal Regulator

The HE9001 is a current mode step down DC/DC converter that provides excellent transient response with no extra external compensation components. This device contains an internal, low resistance, high voltage power MOSFET, and operates at a high 1.5MHz operating frequency to ensure a compact, high efficiency design with excellent AC and DC performance.

Under-Voltage Lockout (UVLO)

Under-voltage lockout (UVLO) protects the chip from operating at an insufficient supply voltage. UVLO protection monitors the internal regulator voltage. When the voltage is lower than UVLO threshold voltage, the device is shut off. When the voltage is higher than UVLO threshold voltage, the device is enabled again.

Thermal Shutdown

Thermal shutdown prevents the chip from operating at exceedingly high temperatures. When the silicon die temperature exceeds 160°C, it shuts down the whole chip. When the temperature falls below its lower threshold (Typ. 130°C) the chip is enabled again.

Internal Soft-Start

The soft-start is implemented to prevent the converter output voltage from overshooting during startup. When the chip starts, the internal circuitry generates a soft-start voltage (SS) ramping up from 0V to 0.6V. When it is lower than the internal reference (REF), SS overrides REF so the error amplifier uses SS as the reference. When SS is higher than REF, REF regains control. The SS time is internally to 1ms.

Startup and Shutdown

If both V_{IN} and EN are higher than their appropriate thresholds, the chip starts. The reference block starts first, generating stable reference voltage and currents, and then the internal regulator is enabled. The regulator provides stable supply for the remaining circuitries. Three events can shut down the chip: EN low, V_{IN} low and thermal shutdown. In the shutdown procedure, the signaling path is first blocked to avoid any fault triggering. The comp voltage and the internal supply rail are then pulled down. The floating driver is not subject to this shutdown command.

Applications Information

Setting the Output Voltage

HE9001 require an input capacitor, an output capacitor and an inductor. These components are critical to the performance of the device. HE9001 are internally compensated and do not require external components to achieve stable operation. The output voltage can be programmed by resistor divider.

$$V_{OUT} = V_{FB} \times \frac{R1 + R2}{R2}$$

When sizing R2, in order to achieve low current consumption and acceptable noise sensitivity, use a maximum of 100k Ω for R2. Larger currents through R2 improve noise sensitivity and output voltage accuracy but increase current consumption.

$V_{OUT}(V)$	$R1(K\Omega)$	$R2(K\Omega)$	$L1(\mu H)$	$C_{IN}(\mu F)$	$C_{OUT}(\mu F)$	$C_{FF}(pF)$ Opt.
1.0	6.667	10	1.0	22	22 \times 2	C_{FF} Chapter
1.05	7.500	10	1.0	22	22 \times 2	C_{FF} Chapter
1.2	10.000	10	1.0	22	22 \times 2	C_{FF} Chapter
1.5	15.000	10	1.0	22	22 \times 2	C_{FF} Chapter
1.8	20.000	10	1.5	22	22 \times 2	C_{FF} Chapter
2.5	31.667	10	1.5	22	22 \times 2	C_{FF} Chapter
3.3	45.000	10	2.2	22	22 \times 2	C_{FF} Chapter

All the external components are the suggested values, the final values are based on the application testing results.

Selecting the Inductor

The recommended inductor values are shown in the Application Diagram. It is important to guarantee the inductor core does not saturate during any foreseeable operational situation. The inductor should be rated to handle the maximum inductor peak current: Care should be taken when reviewing the different saturation current ratings that are specified by different manufacturers. Saturation current ratings are typically specified at 25°C, so ratings at maximum ambient temperature of the application should be requested from the manufacturer. The inductor value

can be calculated with:

$$L = \frac{V_{OUT} \times (V_{IN} - V_{OUT})}{V_{IN} \times \Delta I_L \times F_{OSC}}$$

Where ΔI_L is the inductor ripple current. Choose inductor ripple current to be approximately 30% to 40% of the maximum load current. The maximum inductor peak current can be estimated as:

$$I_{L(MAX)} = I_{LOAD} + \frac{\Delta I_L}{2}$$

Under light load conditions below 100mA, larger inductance is recommended for improved efficiency. Larger inductances lead to smaller ripple currents and voltages, but they also have larger physical dimensions, lower saturation currents and higher linear impedance. Therefore, the choice of inductance should be compromised according to the specific application.

Selecting the Input Capacitor

The input current to the step-down converter is discontinuous and therefore requires a capacitor to supply AC current to the step-down converter while maintaining the DC input voltage. For a better performance, use ceramic capacitors placed as close to VIN as possible and a 0.1μF input capacitor to filter out high frequency interference is recommended. Capacitors with X5R and X7R ceramic dielectrics are recommended because they are stable with temperature fluctuations.

The capacitors must also have a ripple current rating greater than the maximum input ripple current of the converter. The input ripple current can be estimated with Equation:

$$I_{CIN} = I_{OUT} \times \sqrt{\frac{V_{OUT}}{V_{IN}} \times \left(1 - \frac{V_{OUT}}{V_{IN}}\right)}$$

From the above equation, it can be concluded that the input ripple current reaches its maximum at $V_{IN}=2V_{OUT}$ where $I_{CIN} = \frac{I_{OUT}}{2}$. For simplification, choose an input capacitor with an RMS current rating greater than half of the maximum load current.

The input capacitance value determines the input voltage ripple of the converter. If there is an input voltage ripple requirement in the system, choose the input capacitor that meets the specification. The input voltage ripple can be estimate with Equation:

$$\Delta V_{IN} = \frac{I_{OUT}}{F_{OSC} \times C_{IN}} \times \frac{V_{OUT}}{V_{IN}} \times \left(1 - \frac{V_{OUT}}{V_{IN}}\right)$$

Similarly, when $V_{IN}=2V_{OUT}$, input voltage ripple reaches its maximum of $\Delta V_{IN} = \frac{1}{4} \times \frac{I_{OUT}}{F_{OSC} \times C_{IN}}$.

Selecting the Output Capacitor

An output capacitor is required to maintain the DC output voltage. The output voltage ripple can be estimated with Equation:

$$\Delta V_{OUT} = \frac{V_{OUT}}{F_{OSC} \times L} \times \left(1 - \frac{V_{OUT}}{V_{IN}}\right) \times \left(R_{ESR} + \frac{1}{8 \times F_{OSC} \times C_{OUT}}\right)$$

There are some differences between different types of capacitors. In the case of ceramic capacitors, the impedance

at the switching frequency is dominated by the capacitance. The output voltage ripple is mainly caused by the capacitance. For simplification, the output voltage ripple can be estimated with Equation:

$$\Delta V_{OUT} = \frac{V_{OUT}}{8 \times F_{OSC}^2 \times L \times C_{OUT}} \times \left(1 - \frac{V_{OUT}}{V_{IN}}\right)$$

A larger output capacitor can achieve a better load transient response, but the maximum output capacitor limitation should also be considered in the design application. If the output capacitor value is too high, the output voltage will not be able to reach the design value during the soft-start time and will fail to regulate. The maximum output capacitor value (C_{OUT_MAX}) can be limited approximately with Equation:

$$C_{OUT_MAX} = (I_{LIM_AVG} - I_{OUT}) \times T_{SS} / V_{OUT}$$

Where L_{LIM_AVG} is the average start-up current during the soft-start period, and T_{SS} is the soft- start time.

On the other hand, special attention should be paid when selecting these components. The DC bias of these capacitors can result in a capacitance value that falls below the minimum value given in the recommended capacitor specifications table.

The ceramic capacitor's actual capacitance can vary with temperature. The capacitor type X7R, which operates over a temperature range of -55°C to $+125^{\circ}\text{C}$, will only vary the capacitance to within $\pm 15\%$. The capacitor type X5R has a similar tolerance over a reduced temperature range of -55°C to $+85^{\circ}\text{C}$. Many large value ceramic capacitors, larger than $1\mu\text{F}$ are manufactured with Z5U or Y5V temperature characteristics. Their capacitance can drop by more than 50% as the temperature varies from 25°C to 85°C . Therefore, X5R or X7R is recommended over Z5U and Y5V in applications where the ambient temperature will change significantly above or below 25°C .

Feed-Forward Capacitor (C_{FF})

HE9001 has internal loop compensation, so adding C_{FF} is optional. Specifically, for specific applications, if necessary, consider whether to add feed-forward capacitors according to the situation.

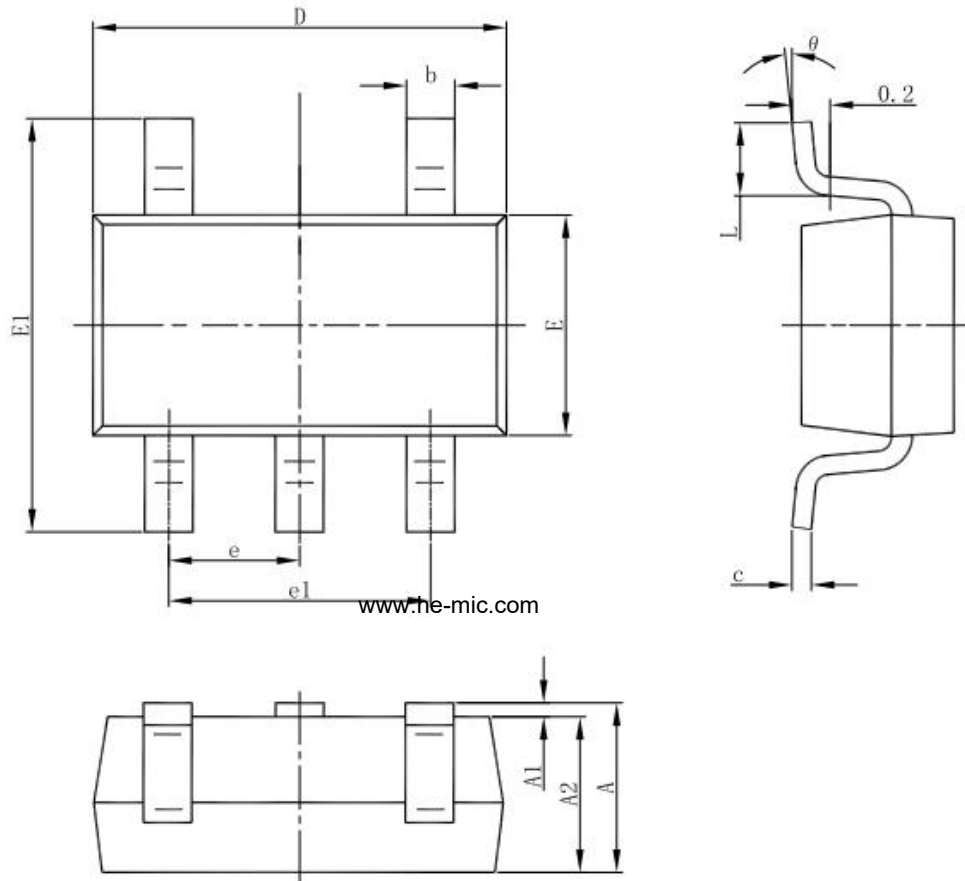
The use of a feed-forward capacitor (C_{FF}) in the feedback network is to improve the transient response or higher phase margin. For optimizing the feed-forward capacitor, knowing the cross frequency is the first thing. The cross frequency (or the converter bandwidth) can be determined by using a network analyzer. When getting the cross frequency with no feed-forward capacitor identified, the value of feed-forward capacitor (C_{FF}) can be calculated with the following Equation:

$$C_{FF} = \frac{1}{2\pi \times F_{CROSS}} \times \sqrt{\frac{1}{R1} \times \left(\frac{1}{R1} + \frac{1}{R2}\right)}$$

Where F_{CROSS} is the cross frequency.

To reduce transient ripple, the feed-forward capacitor value can be increased to push the cross frequency to higher region. Although this can improve transient response, it also decreases phase margin and cause more ringing. In the other hand, if more phase margin is desired, the feed-forward capacitor value can be decreased to push the cross frequency to lower region.

Package Description
SOT23-5 Outline Dimensions



Symbol	Dimensions In Millimeters		Dimensions In Inches	
	Min	Max	Min	Max
A	1.050	1.250	0.041	0.049
A1	0.000	0.100	0.000	0.004
A2	1.050	1.150	0.041	0.045
b	0.300	0.500	0.012	0.020
c	0.100	0.200	0.004	0.008
D	2.820	3.020	0.111	0.119
E	1.500	1.700	0.059	0.067
E1	2.650	2.950	0.104	0.116
e	0.950(BSC)		0.037(BSC)	
e1	1.800	2.000	0.071	0.079
L	0.300	0.600	0.012	0.024
θ	0°	8°	0°	8°